



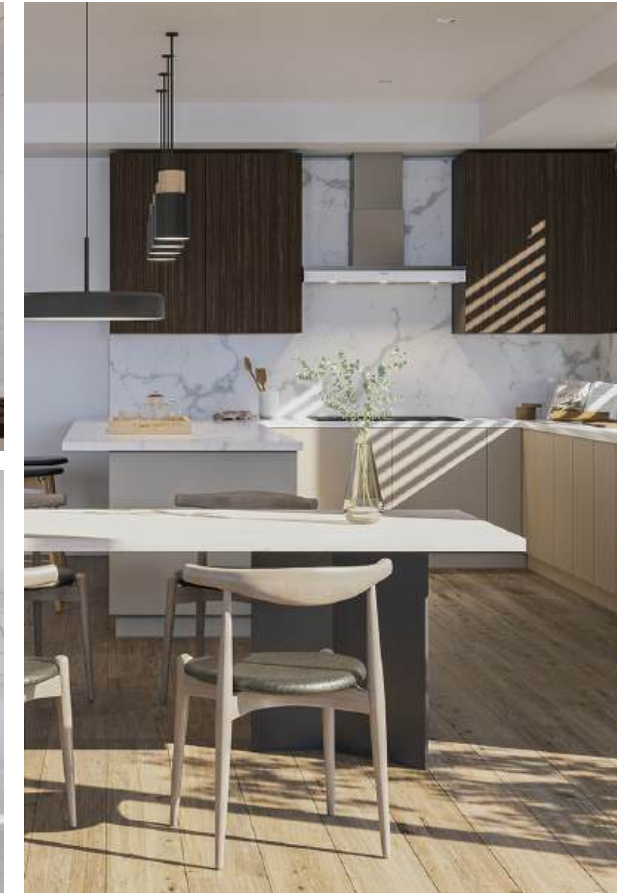
Delyla

411 S Hamel Rd, Los Angeles, CA



Delyla

Make Delyla your home, your hideaway. This limited collection of 37 bold new luxury condos in LA was designed by award-winning builder, etco Homes. Located at 411 S Hamel Road, minutes from Rodeo Drive, Delyla features 1-, 2-, and 3-bedroom single-level residences and penthouse-level homes sized from approximately 1,198 to 3,040 sq. ft. Our penthouse-level residences boast private, rooftop decks that are delivered ready for homeowners to place an outdoor kitchen or jacuzzi at their discretion; and our single-level homes feature private balconies. In select residences, the spacious primary suite is appointed with a luxurious wet room as part of the main bathroom – your respite from the world.



Delyla represents a rare opportunity to experience stunning new construction, with interiors carefully curated and expressed in three distinct design palettes. Choose from Avant Garde, moody, modern with some darker hues; Downtown, a mix of bright and light finishes; and Heritage, a more traditional-modern and warm aesthetic. Residents enjoy exclusive amenities, including a dedicated concierge attendant, a striking lobby wrapped in floor-to-ceiling glass, an outdoor pizza oven and barbeque area, boutique gym and lounge, bike storage, and secure underground parking.

Interiors

- EzyJamb® flush residence entry doors with 90-minute fire rating
- LED recessed lighting throughout
- Floor-to-ceiling sliding glass doors lead out to open-air terraces

Kitchen Appliances

- SubZero® 36" over-and-under refrigerator/freezer with ice maker
- Wolf® 30" E Series built-in oven
- Wolf® 30" E Series transitional microwave oven
- Wolf® 36" transitional induction cooktop
- Wolf® 36" cooktop wall hood in stainless steel
- Asko® by SubZero 40 Series dishwasher
- Gessi® Natalia polished chrome kitchen faucet with pullout handle

Bathroom Appointments

- Duravit® sinks and toilets in all baths
- Frameless glass-enclosed showers alongside separate freestanding and drop-in Hydro Systems® soaking tubs in primary baths
- Decoraport® touch button, anti-fog LED mirrors in primary baths, and large wall-mounted mirrors in all secondary and powder baths
- Gessi® Cascade dual waterfall shower heads in primary baths with handshower
- Gessi® Emporio pivoting shower heads in secondary showers and sliding rail hand showers
- Wet room with Hydro Systems® bathtub and Gessi® Cascade waterfall shower in select units

Surfaces

- Caesarstone polished quartz countertops and backsplashes in kitchen, bath, and laundry rooms

Cabinetry

- Three flat panel design schemes from Hartmark®
- Concealed hinges
- Euro-style drawers and doors with soft-closing mechanism
- LED light rail under all upper cabinets
- Floating, wall hung cabinets in all baths

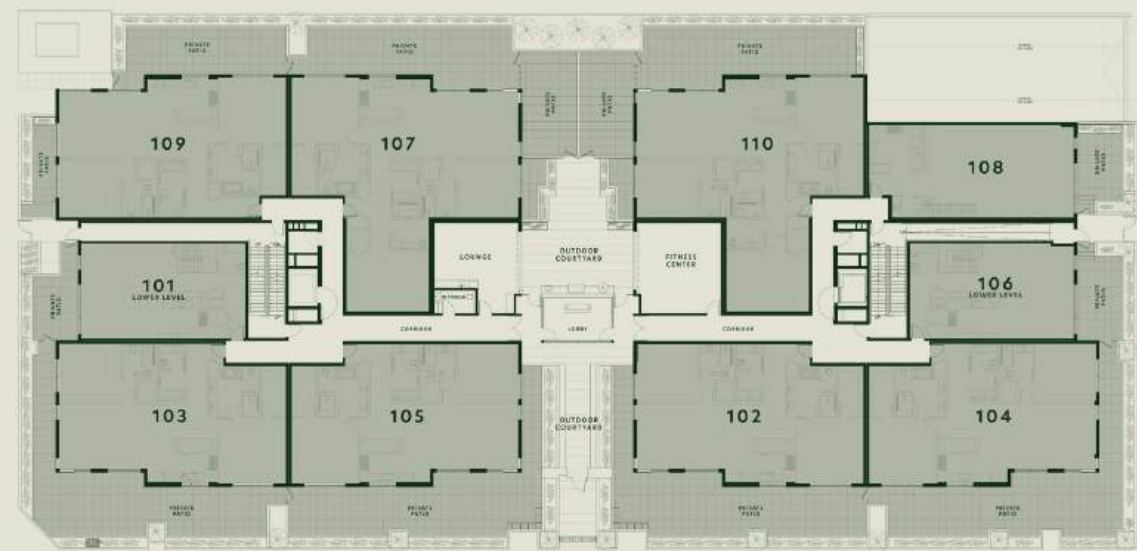
Flooring

- Decorative 5-8" wide-plank hardwood floor throughout living areas and bedrooms
- Porcelain tile flooring in baths and laundry rooms

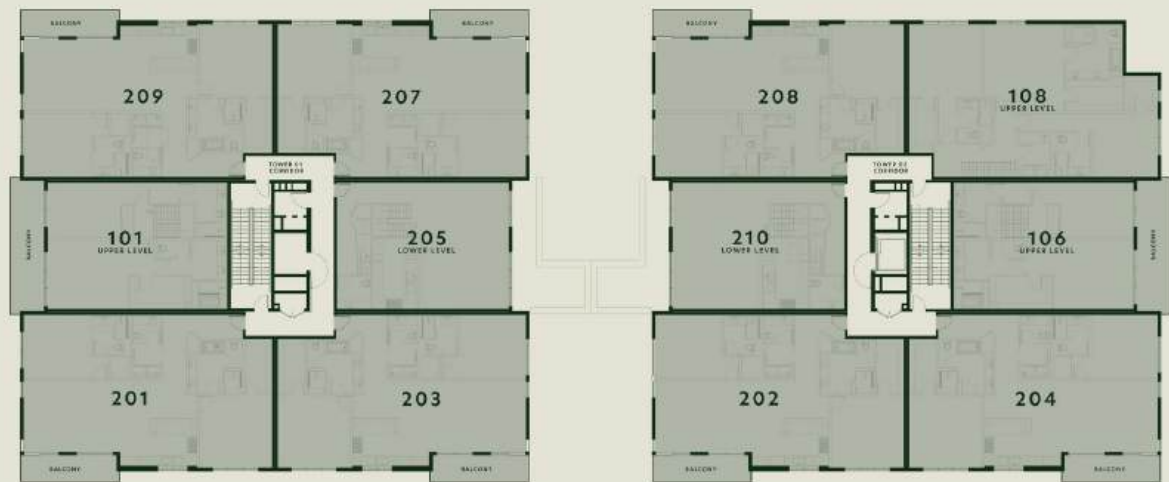
Amenities

- Lobby, on-site concierge, video surveillance, visitor management and guest coordination
- Personalized, on-site concierge services available
- Open-air outdoor courtyard with outdoor grilling facilities, pizza oven, seating, and rooftop lounge on each building
- Private boutique gym with state-of-the art fitness equipment
- Quick access to the best local cafes, shops and restaurants
- Subterranean, private access parking
- Secure bicycle storage
- Parking with EV charging conduits available

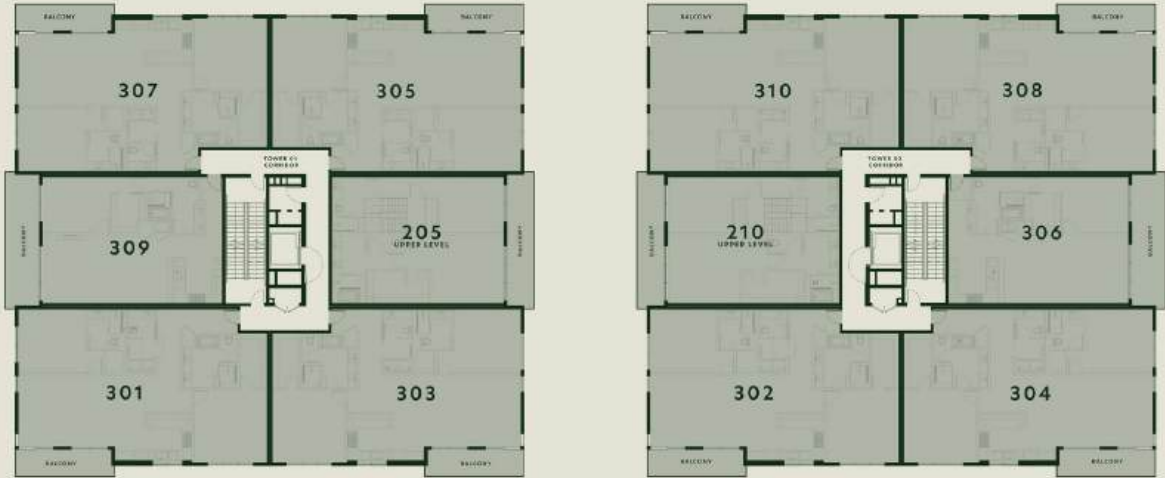
Level 1



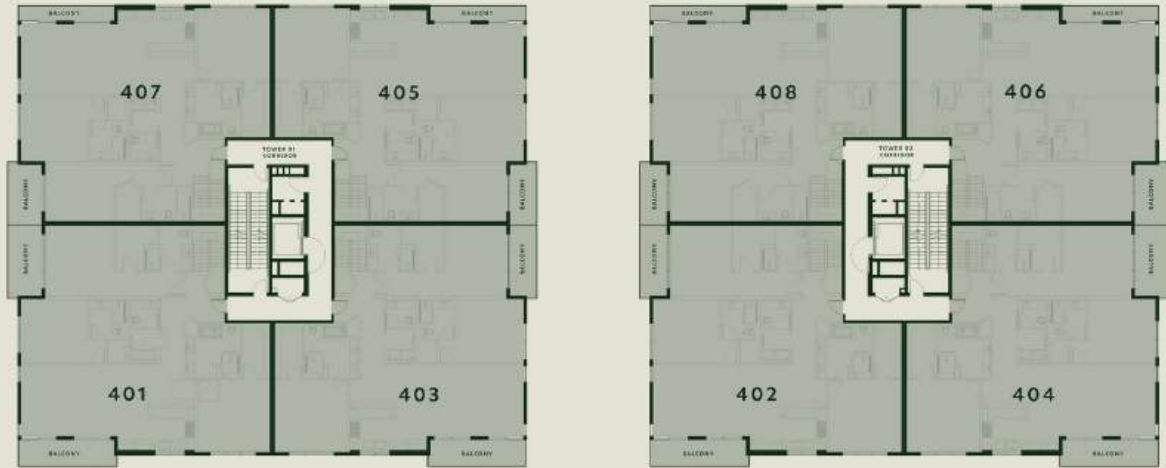
Level 2



Level 3



Level 4



Rooftop Level





Delyla residents enjoy exclusive amenities, the kind of luxuries sophisticated homebuyers expect today in the Beverly Hills real estate market and when shopping for West Los Angeles lock-and-leave residences.

Amenities include an concierge attendant, a striking lobby wrapped in floor-to-ceiling glass, a landscaped terrace with an outdoor pizza oven, boutique gym and lounge, and secure underground parking . You might be tempted to never leave this sweet haven. Learn more about the place where life meets lifestyle.

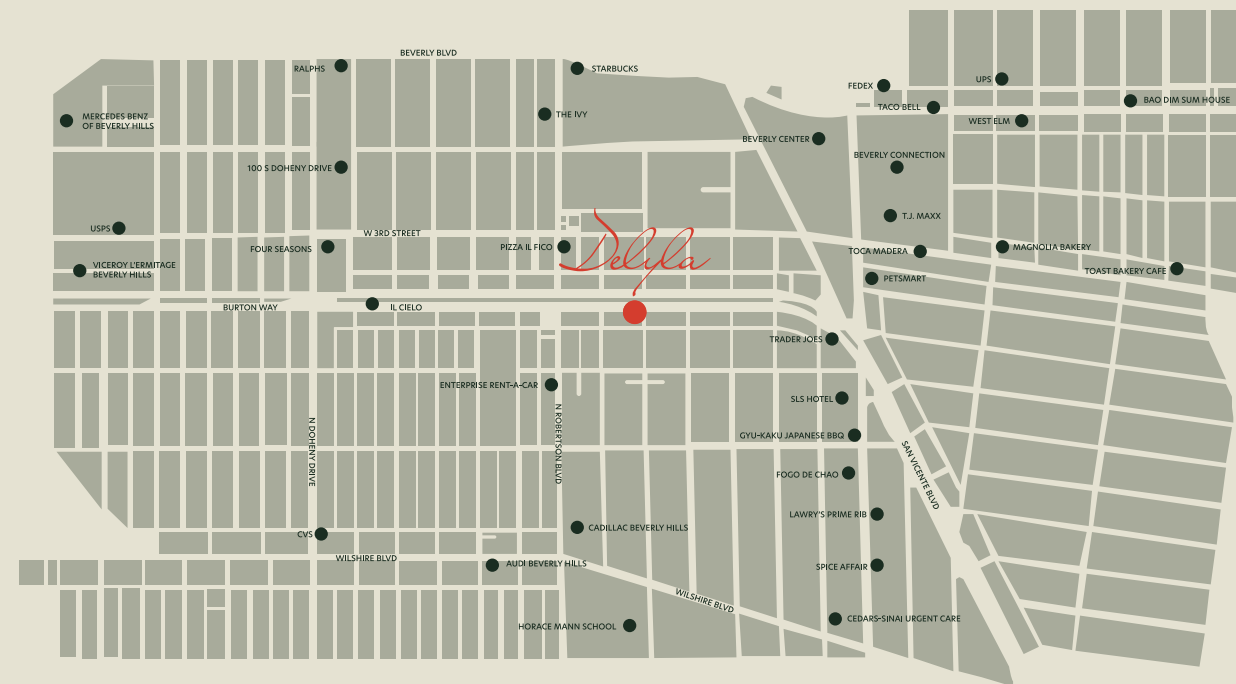


Welcome to Beverly Grove, an iconic LA neighborhood with the sophistication of Beverly Hills and the creative flair of West Hollywood. One of the most walkable parts of LA, Beverly Grove is central to famous restaurants, luxury hotels, entertainment, shopping, and museums.

1. Beverly Hills Hotel 2. Hollywood Sign 3. A.O.C. Restaurant 4. Griffith Observatory

Explore Beverly Grove

Delyla residents are just minutes from Rodeo Drive, the Beverly Center, the Melrose district, Fairfax, Mid-Wilshire, and trendy Robertson Boulevard. The options are endless: YSL, Louis Vuitton, Gucci, the Polo Lounge, The Grove retail and entertainment mecca, the historic original Farmers Market, Los Angeles Museum of Modern Art, and an abundance of Beverly Grove restaurants that can satiate any craving, from high-end sushi to Tijuana tacos.





etcoHOMES

Delyla

CONTACT:

info@EtcoHomes.com

delylabeverlyhills.com

The developer reserves the right to make modifications in materials, specifications, plans, pricing, various fees, designs, scheduling and delivery of the homes without prior notice. All dimensions are approximate and subject to normal construction variances and tolerances. Plans and dimensions may contain minor variations from floor to floor. This is not an offer to sell or solicitation to buy to residents in jurisdictions in which registration requirements have not been fulfilled but is intended for information only. Listing Broker: Real DRE #02022092. Obtain the property report or its equivalent by federal and state law and read it before signing anything. No federal or state agency has judged the merits or value, if any, of this property. 